

Smart Mobile Terminal

SUNMI V3 MIX New



reddot winner 2024



MIX, the all-in-one enterprise tablets.



MIX your POS terminal to capture businesses anywhere, anytime.

10" high-resolution display and a built-in high speed printer make a mobile and desktop terminal.

MIX, design not only for payment.

Ergonomically designed for a comfortable grip. Professional scanner integrated 1D/2D barcode scanning. Aluminum-magnesium alloy frame and incell touchscreen make it strong yet slim and light.

*All Pictures shown are for illustration purpose only, actual product may vary.

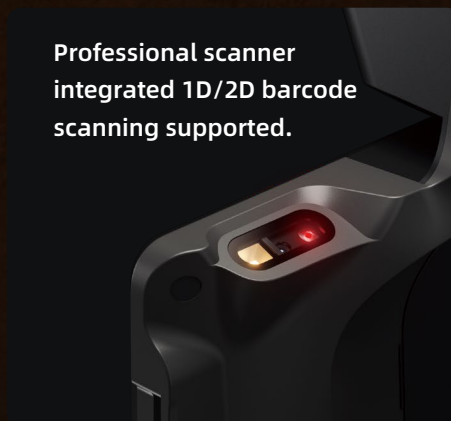
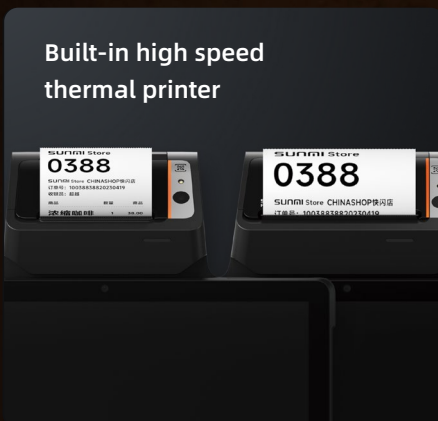
MIX for higher performance.

Qualcomm hexa-core processor and 4GB RAM+32GB ROM for an assured strong performance.

MIX for wider extensibility.

Specially designed rotatable functional cradle enable cash drawer, handheld scanner and network among other accessories that boost your business.

*Both rotatable cradle and non-rotatable cradle options are available.



SUNMI V3 MIX Application Scenario



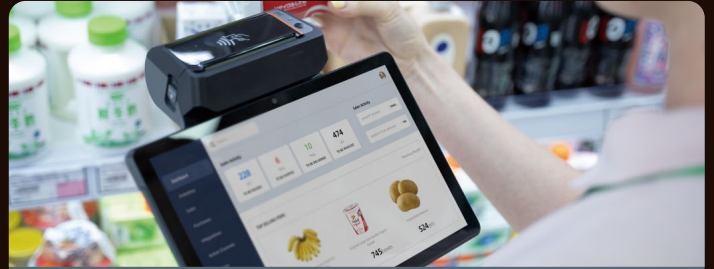
Tableside Ordering



One-on-one Service



Drive Thru



Inventory Check

SUNMI V3 MIX Tech Specs

General Configuration

| | | | | |
|---|---|--|---|--|
| Product Model T5701 58mm version T5711 80mm version | OS SUNMI OS 4.0 (based on Android 13) | Processor Qualcomm hexa-core 2.4/1.9GHz | Memory 4GB RAM+32GB ROM | Display 10.1" HD 1280 x 800 IPS |
| Battery Removable Lithium battery 7.2V/2600mAh | Camera Front 2MP FF QR Payment 0.3MP FF | Scanner 2D professional scanner | Wi-Fi Supports IEEE 802.11 a/b /g/n/ac 2.4G/5G | Speaker 1.2W |
| Bluetooth BT2.1/3.0/4.2, supports BLE | Button Power Key, Volume Key and Scan Key | GPS GPS, AGPS | NFC Reader Type A&B card Mifare card, FeLica card ISO/IEC 14443 and ISO 15693 compliant | PSAM Card Slot PSAM Card slot, complies with ISO7816 standard, 1.8V/3.0V |
| SIM Card Slot Dual Nano SIM Card slot, Support 1.8V/3.0V | SD Card Slot MicroSD *1 | Fingerprint Only for login (Optional) | Power Adapter Input: AC100-240V, Output: 5V/2A | Dimensions (L*W*H) 246*231*73mm |
| Weight 670g(58mm)/710g(80mm) | Cradle (Optional) For charging, 3*USB Type A, RJ11, RJ45 | Cradle Customer Display (Optional) USB 6.7" touchscreen | Environment Operating temperature: 0°C~45°C (except 3D camera) Storage temperature: -20°C~60°C | |

58 Version

80 Version

Printer

Thermal Printer, Print speed: 70mm/s
 Paper Roll Width / Diameter: 58mm/ 40mm

Thermal Printer, Print speed: 70mm/s
 Paper Roll Width / Diameter: 80mm/ 40mm

*All specifications are subject to change without (prior) notice.